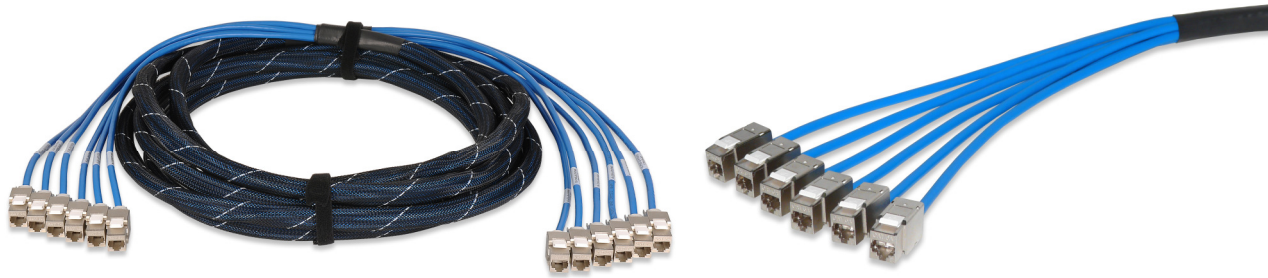


## Pre-Terminated Category 6 Screened Trunk Assemblies



Pre-terminated Category 6 Screened Trunk Assemblies help to reduce significantly both time and cost of a category 6 cabling installation. Terminated and tested in a controlled manufacturing environment, cut to the customer pre-ordered lengths, and ready to install in a patch panel, trunk assemblies eliminate all these operations in the field making your job easy and efficient. Trunk cables are available in a jack-to-jack and jack-to-blunt cut configurations. Trunk cables can be used with any Signamax field-configurable patch panel except 48U-HDMMP-1R.

### KEY FEATURES

- Ready-to-use product – cable bundles are ready for installation and require no additional termination operations except the one-ended designs
- Solid cable and keystone jacks used in the assembly meet and exceed category 6 specifications
- Pre-tested at the factory per ANSI/TIA-568-C.1 requirements
- All cable legs are labeled at both ends for easy identification and aligning in the field
- Each cable bundle is enclosed in a CMR- or CMP-rated mesh sleeve that retains the bundle and protects it during installation
- Mesh sleeve is fixed by heat-shrink tubing that can be used as an anchor point when cable pulling is needed
- Compatible with all Signamax field-configurable patch panels except 48U-HDMMP-1R



### ORDERING INFORMATION

#### Category 6 Pre-Terminated Screened Trunk Assemblies

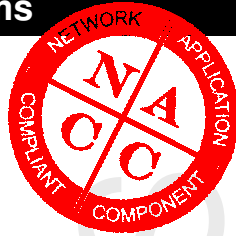
Part Number	Description
6L-C6S-JJ-P-FXXX	Category 6 6-Leg Trunk Cable, Jack-to-Jack, Screened (F/UTP) Cable, CMP
6L-C6S-JB-P-FXXX	Category 6 6-Leg Trunk Cable, Jack-to-Open, Screened (F/UTP) Cable, CMP

For length substitute XXX for length in feet. Minimum length is 3 m (10 ft). Maximum length is 90 m (295 ft). Standard cable color is gray. Other colors are available. Standard cable is straight-cut for either left or right cable exit. Staggered-cut cables are available. For riser-rated (CMR) cable substitute R for P in P/N.

### RELATED PRODUCTS

Product/Product Group	Spec Sheet #
Unloaded High Density Multimedia Patch Panel _____	PSS.U-HD-MM-PP (A-OCT-08)

SPECIFICATIONS



## Pre-Terminated Category 6 Screened Trunk Assemblies

### SPECIFICATIONS

#### TRANSMISSION PERFORMANCE

ANSI/TIA-568-C.2: meets or exceeds category 6 (1–250 MHz) permanent link specifications  
NOTE: All cable trunks require field testing after installation

#### TRANSMISSION MEDIA

Screened 100-Ohm twisted pair (F/UTP)

#### JACK TYPE

8p8c (8-position, 8-contact) "RJ45" style, keystone design

#### WIRING SCHEME

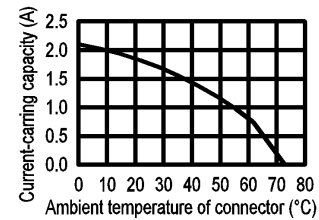
ANSI/TIA-568-C.2: T568B

#### WIRE GAUGE

23 AWG, solid copper

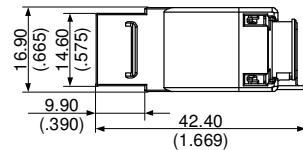
#### ELECTRICAL – JACK

Insulation resistance: min 500 MOhm @ 100 V<sub>dc</sub>  
Dielectric withstanding voltage: 1,000 V<sub>dc/ac</sub> peak contact-to-contact @ 60 Hz for 1 min  
Spring wire contact resistance: max 20 mOhm  
IDC contact resistance: max 2.5 mOhm  
Current rating: see figure



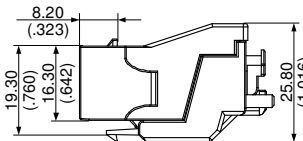
#### ELECTRICAL – CABLE

Spark test: 2,000 ± 250 V<sub>ac</sub>  
Dielectric strength: 2,500 V<sub>dc</sub> / 3 seconds  
Insulation resistance: min 150 MOhm/km (46 MOhm/kft)  
Conductor resistance: max 9.38 Ohm / 100 m (328 ft) @ 20 °C (68 °F)  
Resistance unbalance: max 2 %  
Capacitance unbalance: max 330 pF / 100 m (328 ft)  
Mutual capacitance: max 5,600 pF / 100 m (328 ft)



#### CONSTRUCTION – JACK

Housing: zinc-alloy fully shielded grounding post for 2.5 x 0.5-mm (0.110 x 0.020-in) female disconnect  
Jack spring wire: phosphor bronze alloy plated with 50 µin of gold over 70-100 µin of nickel  
IDC: 110 type, phosphor bronze alloy with 100-µin 100% tin (Sn) alloy



#### MOUNTING DIMENSIONS – JACK

D 42.40 mm H 25.80 mm W 16.90 mm  
D 1.669 in H 1.016 in W 0.665 in

#### CONSTRUCTION – CABLE

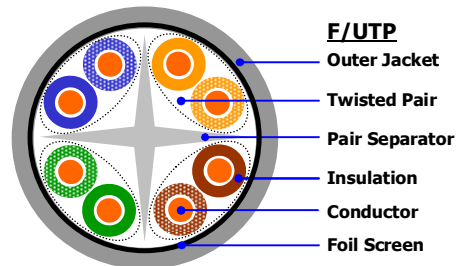
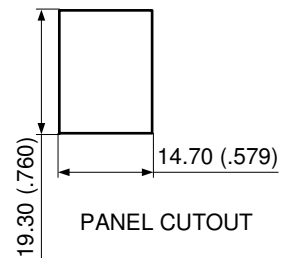
CONDUCTOR:  
Material: bare copper  
Size: 23 AWG  
Construction: 1/0.570 ± 0.02 mm (1/0.0224 ± 0.001 in)

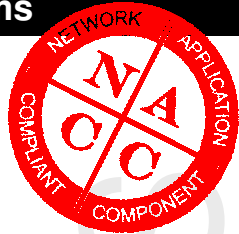
INSULATION:  
Material: CMR- or CMP-rated thermoplastic  
Diameter: 1.1 ± 0.02 mm (0.04 ± 0.001 in)  
Color coding: blue/white-blue, orange/white-orange, green/white-green, brown/white-brown

Elongation: min 300 %  
Tensile strength: min 1.682 kg/mm<sup>2</sup> (0.0058 psi)  
CENTRAL ELEMENT: CMR- or CMP-rated thermoplastic, cross-shaped

SHEATH:  
Material: CMR- or CMP-rated thermoplastic  
Diameter: 7.8 ± 0.3 mm (0.31 ± 0.01 in)  
Color: see ORDERING INFORMATION

SCREEN:  
PET tape: 0.023 mm (0.0009 in) thickness  
Aluminum/PET tape: 0.025 mm (0.0010 in) thickness  
Tinned copper drain wire: 0.46 mm (0.018 in) diameter





## Pre-Terminated Category 6 Screened Trunk Assemblies

- **MECHANICAL – JACK**

Total contact force: min 800 g for 8 wire leads  
Retention force: 50 N (11 lbf) for 60 ± 5 s  
Mating cycle life: min 750 cycles

- **MECHANICAL – CABLE**

Tensile strength: > 400 N (90 lbf)  
Minimum bend radius: 25 mm (1 in)

- **ENVIRONMENTAL CONDITIONS**

Storage: -40 °C – +70 °C (-40 °F – +158 °F)  
Operation: -10 °C – +60 °C (+14 °F – +140 °F)  
RH (operation): max non-condensing 93 %

- **COMPLIANCE**

ANSI/TIA-568-C.2, IEC 60603-7, IEC 61156-6, IEC 60332-1-2, FCC Part 68 Subpart F, UL 94V-0, UL 444, UL 1666

- **APPLICATIONS**

X.21, V.11, S0, ISDN, CSMA/CD 10BASE-T, 100BASE-TX, 100BASE-T4, 100BASE-T2, 1000BASE-T, 10GBASE-T (up to 55 m (180 ft)), TR 4/16/100, 100BASE-VG, ATM LAN 25/51/155, TP-PMD

- **WARRANTY**

5-year limited component warranty  
10-year Signamax Link/Channel Warranty  
15-year Signamax Extended Component Warranty  
25-year Signamax Cabling System Warranty



SPECIFICATIONS