

NOTES:

TRANSMISSION PERFORMANCE

CMK-F: up to 1 MHz
 CMK-F3: up to 3 MHz

TRANSMISSION MEDIA

Coaxial, 75 Ohm (RG6/U, RG-58/U)

WIRE GAUGE

18-22 AWG (0.64 - 1.07 mm) solid

ELECTRICAL

Frequency range:
 CMK-F: 1 GHz DC
 CMK-F3: 3 GHz DC
 Impedance: 75 Ohm
 Insertion loss:
 CMK-F: < 0.3 dB
 CMK-F3: < 0.2 dB
 Return loss:
 CMK-F3: > 30 dB
 Contact resistance: < 4 mOhm
 Insulation resistance: min 500 MOhm at 100 V_{dc}
 Inductance: min 500 nH
 Capacitance: min 2 x 1.5 nF
 Operational voltage: 250 V_{dc}
 Test voltage: 750 V_{dc} for 1 min
 Peak voltage rating: 500 V_{dc}
 Dielectric withstanding voltage: 1,500 V_{rms}
 Feed-through current: max 10 A

CONSTRUCTION

Housing: high impact thermoplastic, UL94V-0 fire retardant
 Shell: brass, nickel plated
 Seizing pin:
 CMK-F: bronze alloy, tin plated
 CMK-F3: 360-degree beryllium bronze, gold plated
 Insulation:
 CMK-F: low-density polyethylene (LDPE)
 CMK-F3: nylon
 Nut: iron plated with nickel over copper

MECHANICAL

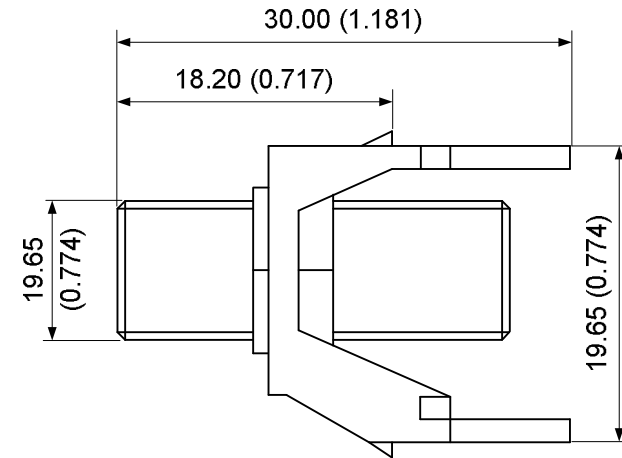
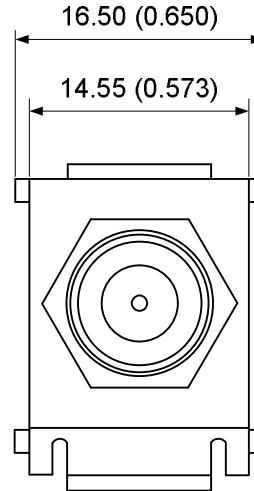
Mating cycles: min 500
 Holding force: > 160 g (initial)
 > 120 g (after insertion)
 Interface dimensions: similar to MIL-C-39012
 Housing shall support 2.2 kg force minimum applied from either direction

ENVIRONMENTAL CONDITIONS

Storage: -40°C - +70°C (-40°F - +158°F)
 Operation: -10°C - +60°C (+14°F - +140°F)
 RH (operation): max non-condensing 93%
 Vibration, shock, and temperature cycling in accordance with MIL-STD-1344

REVISIONS

ZONE	REV	DESCRIPTION	DATE	APPROVED
	A	A-MAY-09 CMK-F	MAY'09	



UNLESS OTHERWISE SPECIFIED
 DIMENSIONS ARE IN MILLIMETERS (INCHES)
 TOLERANCES (MM):
 L<=20 (0.8) ±0.1 (0.004)
 L=20-60 (0.8-2.4) ±0.15 (0.006)
 L>20 (0.8) ±0.2 (0.008)
 ANGULAR: ±0°50'

MATERIAL: AS NOTES
MECHANICAL: AS NOTES
ELECTRICAL: AS NOTES



PROJECT ID SPCS - PD		FILE SPCS-PD.KJ.CMK-F	MAY'09
PROCESS	INITIALS	NAME	DATE
DRAWN			
CHECK			
APPROVED			

16295 NW 13th Ave, Ste A, Miami, FL 33169, PH: (305) 944-7710, FX: (305) 949-4483, www.signamax.com			
TITLE CMK-F (F-TYPE CONNECTOR MODULE)			
SIZE A	CAGE CODE	DWG. NO.	REV A
SCALE 1:1	UNIT MM (IN)	SHEET 1 OF 1	