



**C-300 Series Key Digital
Enterprise AV – HD over IP Systems
Solution Guide**

Key Digital AV over IP Solution Guide

SC30010

C-300 48 Port Gigabit Managed Switch

SC30020

C-300 24 Port Gigabit PoE+ Full Power Managed Switch

(Total Power Budget: 370W, can extend to 740W)

SC30030

C-300 24 Port Gigabit PoE+ Managed Switch

(PoE Power Budget: 200 W)

SC30040

C-300 24 Port Gigabit Managed Switch

SC30050

C-300 8 Port Gigabit PoE+ Managed Switch

(PoE Power Budget: 125 W)

SC30060

C-300 8 Port Gigabit Managed Switch

How to Use This Guide

This guide includes detailed instructions on how to optimize a C-300 Series switch for the Key Digital Enterprise AV – HD over IP Systems based on the requirements and information provided by Key Digital.

Who Should Read this Guide? This guide is for network administrators who are responsible for operating and maintaining network equipment. The guide assumes a basic working knowledge of LANs (Local Area Networks), the Internet Protocol (IP), the Internet Group Management Protocol (IGMP)

Related Documentation This guide focuses on switch software configuration through the web browser.

For hardware installation please refer:

Quick Start Guide

For detailed configuration options and information about the switch's key features please refer:

Web Management Guide OR CLI Reference Guide

Revision History This section summarizes the changes in each revision of this guide.

Revision	Date	Description
v1.0.0	2020/08/17	Initial Release

Contents

How to Use This Guide	3
C-300 Series Configuration via Web Interface for Key Digital Enterprise AV – HD over IP Systems Configuration via Web Interface	5
Jumbo Frames	6
Internet Group Management Protocol (IGMP)	7
C-300 Series Configuration for Key Digital Enterprise AV – HD over IP Systems using configuration file	10
Loading the prepared configuration file.....	11

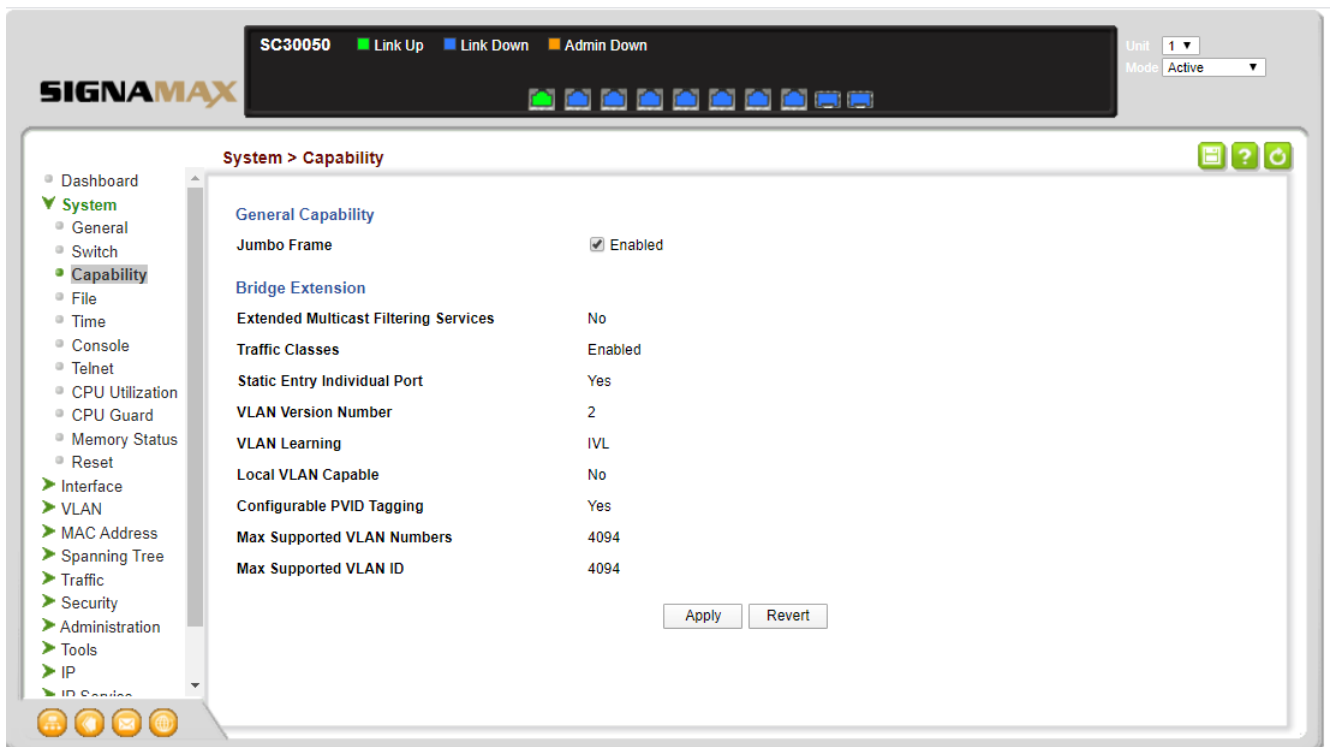
C-300 Series Configuration via Web Interface for Key Digital Enterprise AV – HD over IP Systems Configuration via Web Interface

See the *Preparation for Web Interface* section of the Web Management Guide for how to connect and login to the C-300 Switch

Jumbo Frames

1. Enable Jumbo Frames

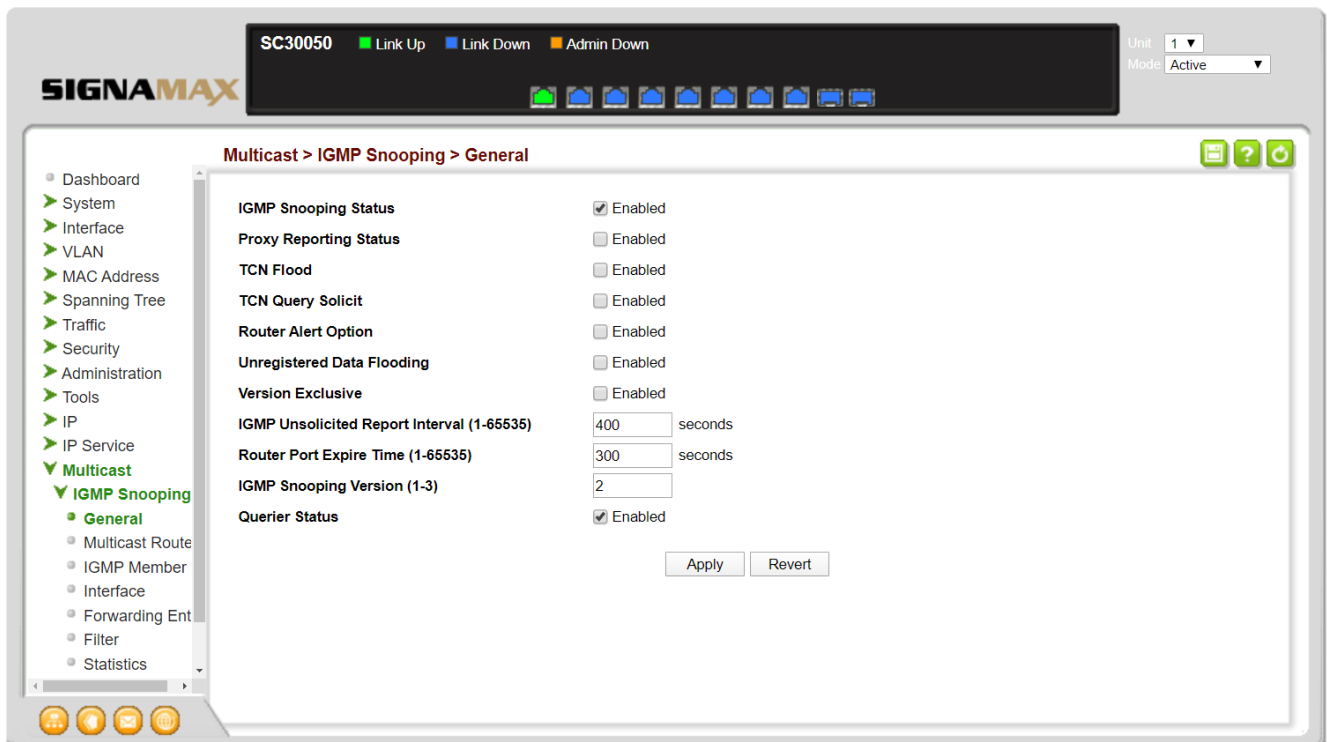
- Navigate to **System->Capabilities**
- Enable **Jumbo Frame**
- Click **Apply**



Internet Group Management Protocol (IGMP)

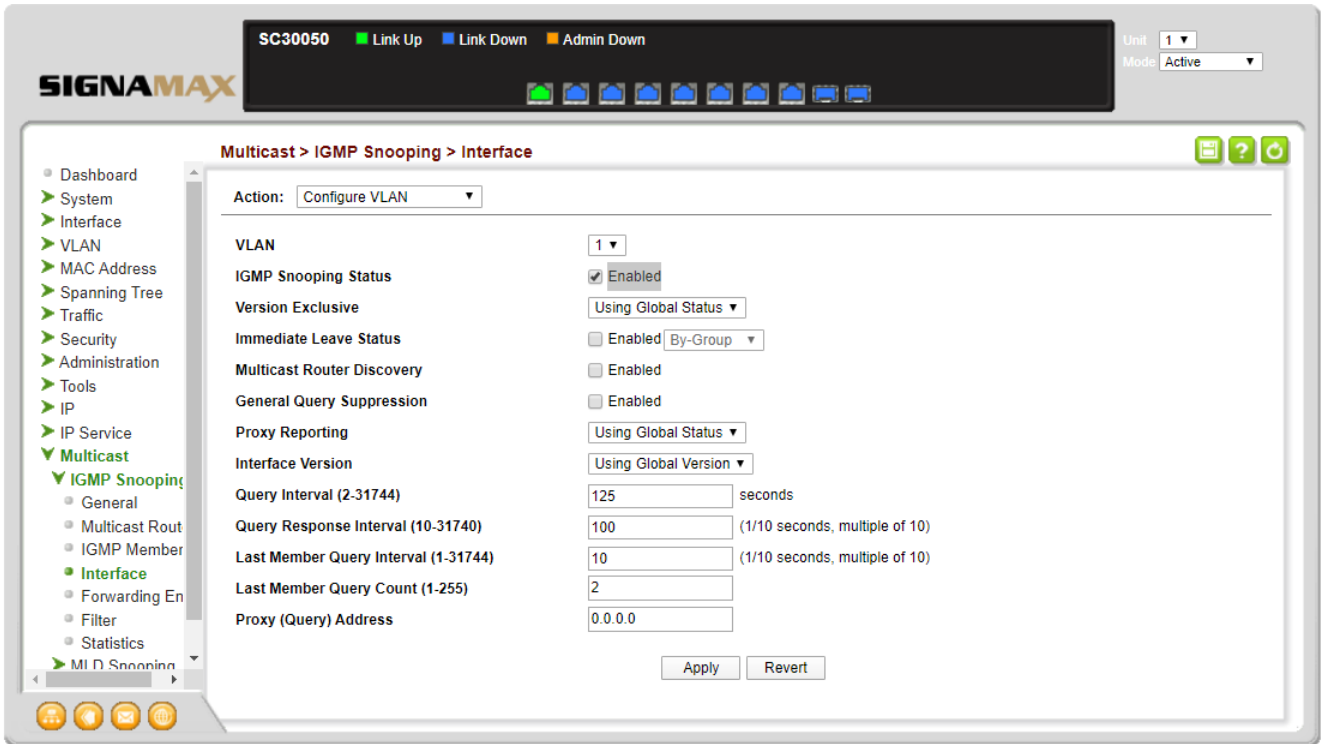
2. General IGMP Configuration

- Navigate to **Multicast->IGMP Snooping - > General**
- Enable **IGMP Snooping Status**
- Enable **Querier Status**
- Click **Apply**



3. Per VLAN IGMP Configuration

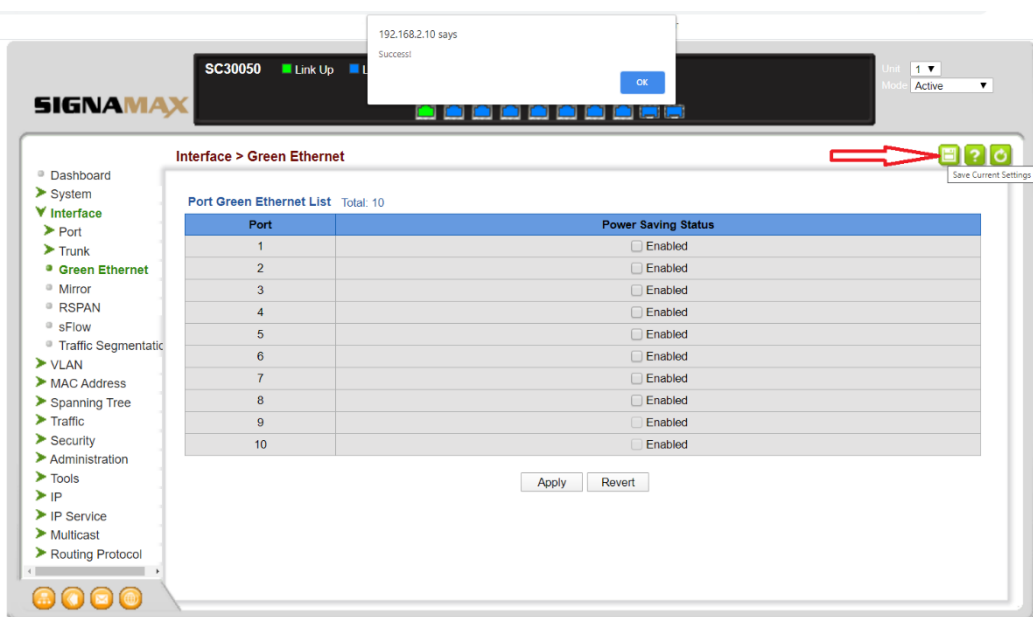
- Navigate to **Multicast->IGMP Snooping - > Interface**
- Choose Action: **Configure VLAN**
- Choose the VLAN that the Av over IP devices will use. By default this is **1**
- Enable **IGMP Snooping Status**
- Click **Apply**



Startup Config

1. Saving the configuration file

- Click the **Save Current Settings** green button in the upper right of the screen



C-300 Series Configuration for Key Digital Enterprise AV – HD over IP Systems using configuration file

An alternative to configuring the switch via the web interface described in the previous section is loading to the switch the configuration file provided in the link below

Loading the prepared configuration file

1. **Download the prepared Key Digital AV over IP configuration file**

Download the prepared configuration file from here:

[C-300 Series Configuration file for Key Digital Enterprise AV – HD over IP Systems](#)

Open the zip file and save the .cfg file on your computer.

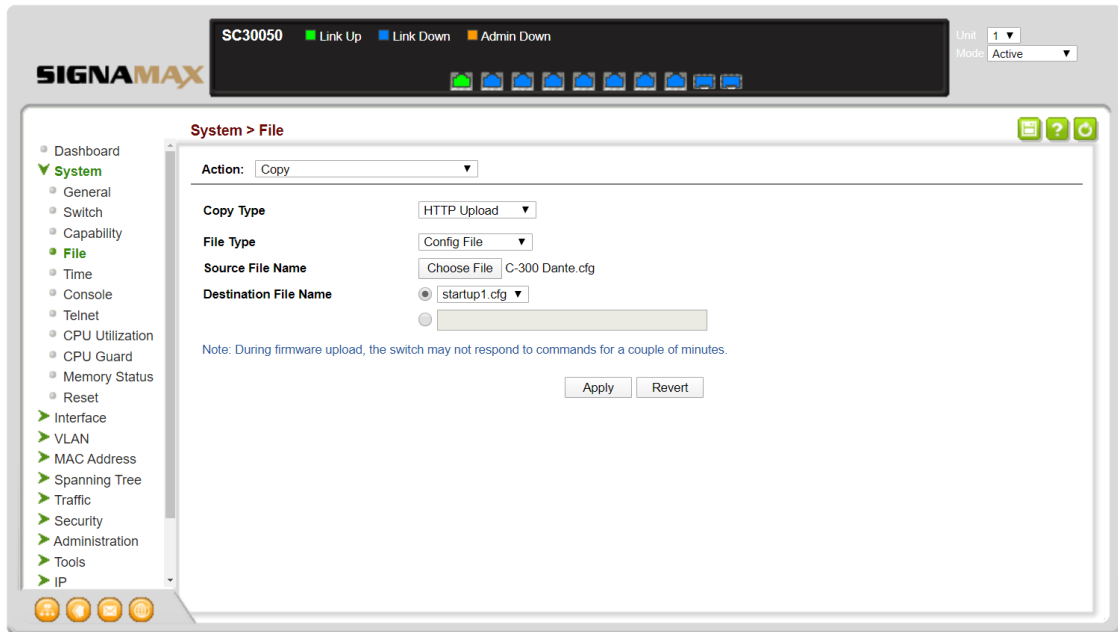
2. **Login to the switch Web Interface**

See the *Preparation for Web Interface* section of the *Web Management Guide* or the *Quick Start Guide* for how to connect and login to the C-300 Switch

3. **Copy the configuration file to the switch**

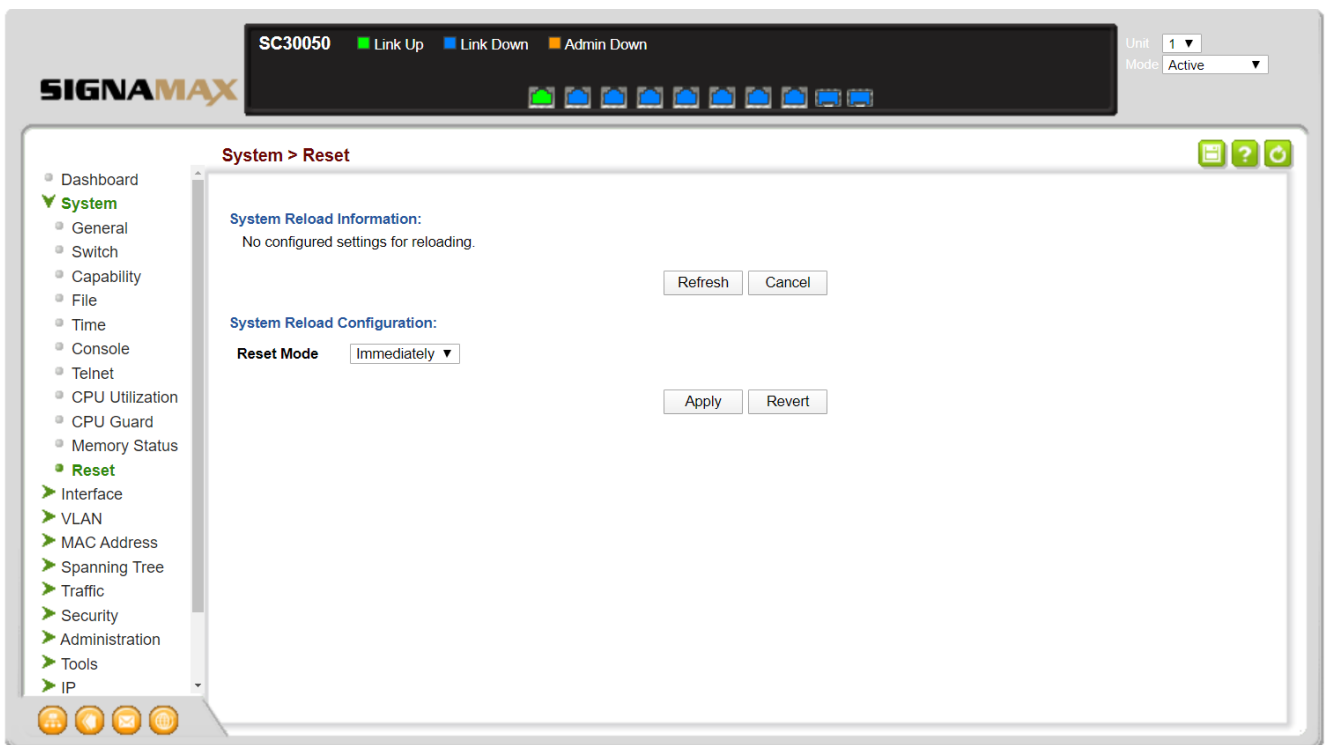
- Navigate to **System->File**
- Select Action: **Copy**
 - Copy Type: **HTTP Upload**
 - File Type: **Config File**
 - Click **Choose File**, navigate to the configuration file you saved in step 1 above and select it
 - Click **Apply**

Key Digital AV over IP Solution Guide



4. Reset the switch

- Navigate to **System->Reset**
- Click **Apply**



5. Complete the switch configuration

After the switch has completed the reboot process (approximately 90 seconds) you can re-login to the switch and make any localized configuration required (IP address, passwords etc.)