

Product

Specifications

RBP Residential Enclosures

KEY FEATURES

- Versatile design, modular and easily scalable to accommodate various equipment such as wireless connectivity, Cat 6, VOIP, ONTs, gateways, battery backup and SOHO access modules
- Can be wall-mounted or installed between studs utilizing built-in mounting ears
- Includes multiple knock-outs to accommodate cables and AC power
- Easily relocate modules using provided push-pins
- Hinged door with lock-set option, door can be relocated on either side of enclosure
- Built-in louvres for improved heat dissipation
- Unique mounting grid organizes components in a square when mounting to the inside of the enclosure for easy access and management
- Constructed with ABS thermoplastic to reduce electrical interference with wireless components
- UL 1863 listed



ORDERING INFORMATION

PART NO.	DESCRIPTION
ENCLOSURE	
RBP-S30C	30" Residential Enclosure with vented door
RBP-S15C	15" Residential Enclosure with vented door
ACCESSORIES	
RBP-LS	Lockset for RBP Residential Enclosures
62KVDM	6-Way 5-2300MHz Vertical Distribution Module
8458JPL-C6C	8-port Category 6 Jack Patch Panel
SC10100	8 Port 10/100/1000 Gigabit Switch with Mounting Plate
RBP-DMP	Device Mounting Plate
OFSB-01	Optical Fiber Splice Box
AFP003-K34	Fiber Cable Spool

SPECIFICATIONS

CONSTRUCTION

Housing: ABS impact resistant thermoplastic - white finish

PHYSICAL CHARACTERISTICS

DIMENSIONS:

RBP-S30C: 28"(H) x 14.38"(W) x 3.96"(D) (71.1 x 36.5 x 10.1cm)

RBP-S15C: 14"(H) x 14.38"(W) x 3.96"(D) (35.6 x 36.5 x 10.1cm)

WEIGHT:

RBP-S30C: 7.4 lb (3.36 kg)

RBP-S15C: 4.2 lb (1.91 kg)

KNOCK-OUTS

RBP-S30C: Top has (5) 2", bottom has (2) 1 1/4" and (2) single gang box knock-outs

RBP-S15C: Top has (8) 1 1/4", bottom has (2) 1 1/2" and (2) single gang box knock-outs

COMPLIANCE & CERTIFICATION

UL 1863

WARRANTY

5 - Year Limited Component

Product Specifications

Residential Enclosures



Coaxial Residential Module

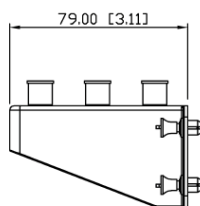
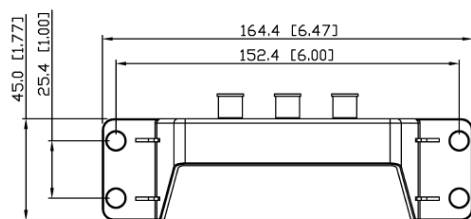
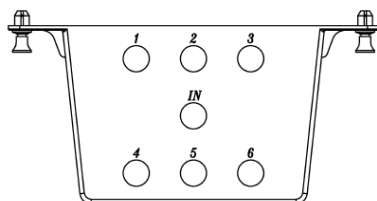
KEY FEATURES

- 6 television outlets for Distributes Video Signal
- Push-pins for easy and quick installation in Signamax Residential Enclosure
- Transmission Performance up to 2G.
- Plastic Bracket reduces signal interference



ORDERING INFORMATION

PART NO.	DESCRIPTION
Coaxial Residential Enclosure Modules	
62KVDM	6-Way 5-2300MHz Verical Distribution Module



SPECIFICATIONS

TRANSMISSION PERFORMANCE

Bandwidth(MHz)	5-47	47-1000	1000-1750	1750-2050	2050-2300
Insertion Loss(dB) Max	16.5	16.5	17.5	20	21
Input Rtn Loss(dB) Min	7	8	8	8	8
Output Rtn Loss(dB)Min	3.5	8	8	8	8
Isolation (dB) Min	13	18	18	18	18

CONSTRUCTION

Bracket: ABS Thermoplastic

DIMENSIONS

62KVDM-RB: 2.28"(H) x 6.46"(W) x 3.27"(D) (5.8 x 16.4 x 8.3cm)

ENVIRONMENTAL CONDITIONS

Operating Temperature: 14 °F to 140 °F (-10 °C to 60 °C)

Storage Temperature: -40 °F to 158 °F (-40 °C to 70 °C)

Operating RH: 93% Max (non-condensing)

COMPLIANCE & CERTIFICATION

UL 1863

WARRANTY

5 - Year Limited Component

Product Specifications

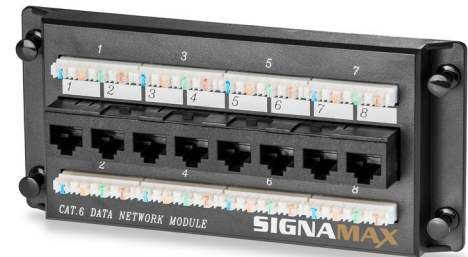
Residential Enclosures



Residential Patch Panel Module

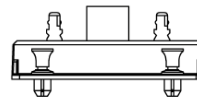
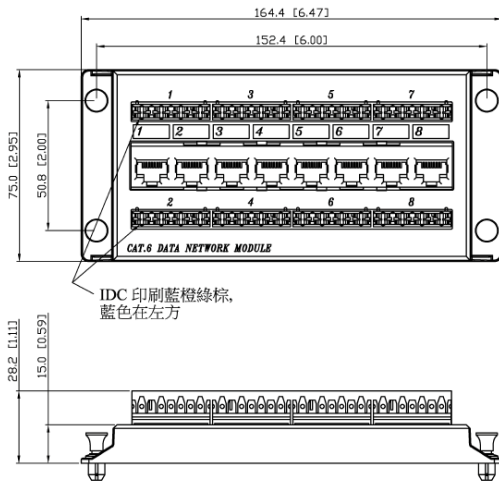
KEY FEATURES

- 8 data ports for distributing data signals
- Push-pins for easy and quick installation in Signamax Residential Enclosure
- Supports Cat6 Performance
- Plastic Bracket reduces signal interference



ORDERING INFORMATION

PART NO.	DESCRIPTION
Residential Enclosure Patch Panel Modules	
8458JPL-C6C	8-port Category 6 Jack Patch Panel



SPECIFICATIONS

TRANSMISSION PERFORMANCE

ANSI/TIA-568.2-D: exceeds category 6 (1-250MHz) component specifications

CONSTRUCTION

Bracket: ABS Thermoplastic

DIMENSIONS

8458JPL-C6C-RB: 2.0"(H) x 6.46"(W) x 1.11"(D) (5.1 x 16.4 x 2.8cm)

ENVIRONMENTAL CONDITIONS

Operating Temperature: 14 °F to 140 °F (-10 °C to 60 °C)

Storage Temperature: -40 °F to 158 °F (-40 °C to 70 °C)

Operating RH: 93% Max (non-condensing)

COMPLIANCE & CERTIFICATION

ANSI/TIA-568.2-D

UL 1863

WARRANTY

5 - Year Limited Component

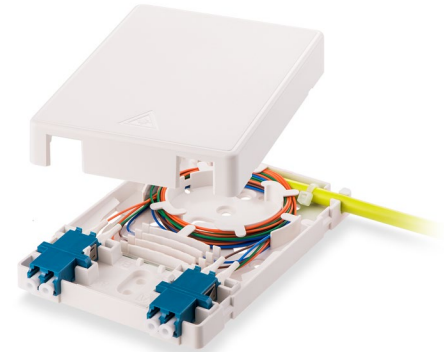
Product Specifications

Residential Enclosures

Residential Fiber Splice Box and Spool Modules

KEY FEATURES

- Telcordia GR-769 compliant
- Four slots for fusion splice protection sleeves
- Capacity for two DX LC or two SX SC adapters
- Available to mount on either standard American or European wall box/bracket or flat surfaces (wall, board, etc.)
- Constructed in ABS thermoplastic
- Typical applications are interconnection points, transition points, FTTx, POL, etc.



OFSB-01

ORDERING INFORMATION

PART NO.	DESCRIPTION
Residential Enclosure Fiber Splice Box Modules	
OFSB-01	Optical Fiber Splice Box
AFP003-K34	Fiber Cable Spool



AFP003-K34

SPECIFICATIONS

CAPACITY

OFSB-01-SCA:

- Adapters: Up to 2
- Fibers: Up to 4
- Sleeves: Up to 4 (40mm)

CONSTRUCTION

ABS Thermoplastic

DIMENSIONS

- OFSB-01-SCA:** 4.61"(H) x 3.31"(W) x 0.71"(D) (11.7 x 8.41 x 1.8cm)
- AFP003-K34:** 4.75"(H) x 2.30"(W) x 0.50"(D) (12.1 x 5.8 x 1.3cm)

ENVIRONMENTAL CONDITIONS

- Operating Temperature:** 14 °F to 140 °F (-10 °C to 60 °C)
- Storage Temperature:** -40 °F to 158 °F (-40 °C to 70 °C)
- Operating RH:** 93% Max (non-condensing)

COMPLIANCE

- TELCORDIA GR-769
- UL 1863

WARRANTY

- 5 - Year Limited Component

Product Specifications

Residential Enclosures



Residential Network Switch Module

KEY FEATURES

- Zero touch Plug and Play connectivity
- Fanless for silent operation
- Energy Efficient
- Compact size



ORDERING INFORMATION

PART NO.	DESCRIPTION
Residential Enclosure Fiber Splice Box Modules	
SC10100	C-100 8 Port Gigabit Switch
DMP-RB	Device Mounting Plate



SPECIFICATIONS

PORTS

8 x 10/100/1000

PERFORMANCE

Switching Capacity: 16Gbps

Forward Rate: 11.9Mpps

4K MAC Addresses

4Mb Packet Buffer

Supports 10K Jumbo Frames

Wirespeed Forwarding

CONSTRUCTION

DMP-RB: rolled steel

ELECTRICAL CHARACTERISTICS

Max Power Consumption: 4W

Power Supply AC Input: 100 – 240 V AC, 50/60 Hz

MTBF: 100K hrs 6Gbps

DIMENSIONS

SC10100: 5.6" W x 3.1" D x 1.1" H (14.2 cm x 7.9 cm x 2.8 cm)

DMP-RB: 6.5" W x 0.8" D x 3.0" H (16.5 cm x 2.1 cm x 7.6 cm)

ENVIRONMENTAL CONDITIONS

Operating Temperature: 14 °F to 140 °F (-10 °C to 60 °C)

Storage Temperature: -40 °F to 158 °F (-40 °C to 70 °C)

Operating RH: 95% Max (non-condensing)

COMPLIANCE

CE Mark: EN 55022, Class B; FCC Part 15 Class B; VCCI Class B

Safety: Temperature: CE/LVD EN60950

WARRANTY

5 - Year Limited Component