

The Signamax C-500 series of fully managed switches are designed for demanding network environments with dual hot swappable power supplies and 10G SFP+ Uplinks. All switches have the capacity for concurrent 30W per port PoE+ delivery. The C-500 switches have full Layer 2 capabilities with enhanced access security, ACLs, traffic prioritization, and IPv6 support.

The C-500 Series switches are built from the ground up for easy deployment and management without compromising any of the power and flexibility traditionally found in enterprise-class switches.



- Dual hot-swappable power supplies for total PoE budget of 1640W
- Non-blocking switches with up to 176Gbps bandwidth
- Static IP Routing & DHCP Server
- 8 dedicated QoS queues for converged voice, video, and data applications
- IEEE 1588v2 Precision Time Protocol (PTP)
- Built in Device Management System (DMS)
- 4 SFP+ 10G uplink ports
- Advanced Layer 2 functionality such as ITU-T G.8031 and ITU-T G.8032 Ethernet Linear and Ring Protection Switching
- 5 year hardware warranty & support at no additional cost

Features for deployment in any solution.

INTELLIGENT POE:

The SC50010 delivers a default 820W PoE budget but can be extended up to 1640W using a secondary AP50030 power supply. The innovative PoE auto-check feature detects if the powered device stops communicating and automatically reboots the device to minimize downtime and operational costs. The C-500 series supports dynamic power allocation and PoE ports can be individually configured for prioritization, scheduling, and consumption.



Port	Ping IP Address	Status Time	Interval (Seconds)	Retry Time	Failure Log	Failure Action	Reboot Time(s)	Max. Reboot Times
1	192.168.1.78	OK	30	3	OK	Nothing	30	3
2	192.168.1.78	OK	30	3	OK	Nothing	30	3
3	192.168.0.20	OK	30	3	OK	Reset Normal	30	3
4	192.168.0.20	OK	30	3	OK	Reset Normal	30	3
5	192.168.0.20	OK	30	3	OK	Reset Normal	30	3
6	192.168.0.20	OK	30	3	OK	Reset Normal	30	3
7	192.168.0.20	OK	30	3	OK	Reset Normal	30	3
8	192.168.0.20	OK	30	3	OK	Reset Normal	30	3
9	192.168.0.20	OK	30	3	OK	Reset Normal	30	3
10	192.168.0.20	OK	30	3	OK	Reset Normal	30	3
11	192.168.0.20	OK	30	3	OK	Reset Normal	30	3
12	192.168.0.20	OK	30	3	OK	Reset Normal	30	3
13	192.168.0.20	OK	30	3	OK	Reset Normal	30	3
14	192.168.0.20	OK	30	3	OK	Reset Normal	30	3

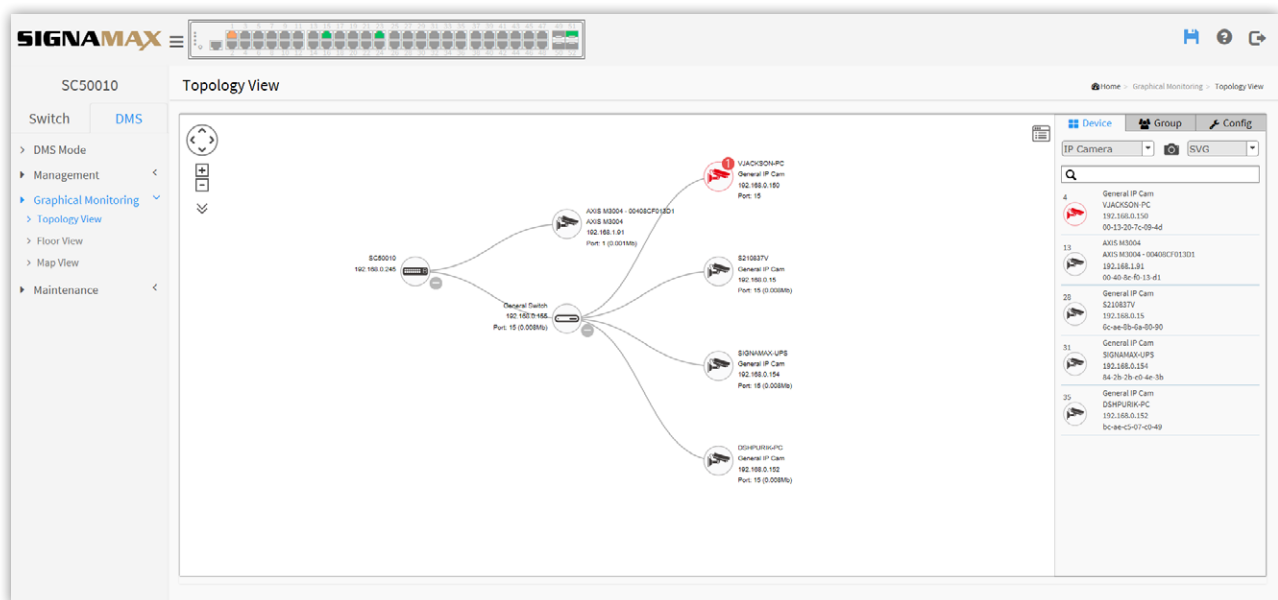
ENTERPRISE GRADE:

The C-500 Series runs a sophisticated operating system that provides a variety of advanced features including:

- Static Routing and DHCP Server
- Dynamic VLAN assignment and Auto Voice VLAN
- Link Aggregation (LACP)
- Ethernet Ring Protection Switching (ERPS)
- IGMP and MLD snooping

DEVICE MANAGEMENT SYSTEM (DMS):

The C-500 Series Device Management System automatically detects and classifies connected network devices. Devices can be placed on an upload floorplan or using Google Maps. The DMS monitors all traffic and packets to the devices and provides day/week analysis and can generate an alarm if an abnormal condition exists. Administrators can view device information including the type, name, address and PoE usage and can reboot or remotely login to the device directly from the DMS system.



C-500 Specifications

PORTS

48 10/100/1000 RJ-45 PoE+ Ports
4 SFP+ 100Mb/1G/10G Ports

PERFORMANCE

32K MAC Addresses
Switching Capacity: 176Gbps
Forwarding Rate: 130.944 Mpps
512 MB DRAM
32 Mb Packet Buffer
64 MB Flash memory
Supports 14K Jumbo Frames
Wirespeed forwarding
IPv4/IPv6 Dual Protocol Stack

SECURITY

DDOS Protection
Port Isolation
Broadcast/Multicast/Unknown Storm Control
Up to 512 Access Control Lists (ACL) based on L2/L3/L4
Port Security
AAA (IEEE 802.1X RADIUS/TACACS+)
IP Source Guard
DHCP Snooping
Encrypt switch access with SSH and SSL

LAYER 3

Up to 130 Static routes
DHCP v4/v6 Client / DHCP Relay / DHCP Server

LAYER 2

SFP+ ports support IEEE 802.3u (100FX),
802.3z (1000SX/LX/LHX/ZX), 802.3aq (10GBase-SR/LR/LRM)
IEEE 802.3x Flow Control

Spanning Tree:

IEEE 802.1D Spanning Tree Protocol (STP),
IEEE 802.1w Rapid Spanning Tree Protocol (RSTP),
IEEE 802.1s Multiple Rapid Spanning Tree Protocol
Loopback Detection
BPDU Filter/Guard
Root Guard

Up to 4094 IEEE 802.1Q (802.3ac) VLANs:

Port-Based/MAC-Based/Protocol-Based(IEEE 802.1v)
Guest VLAN
Auto Voice VLAN
Dynamic VLAN Assignment
GARP VLAN Registration Protocol (GVRP)
802.3ad Link Aggregation (static and LACP)

Ring Management:

ITU-T G.8031 Ethernet Linear Protection Switching
ITU-T G.8032 Ethernet Ring Protection Switching (ERPS)

Multicast:

IGMP v1/v2/v3 snooping
IGMP Querier
IGMP Immediate leave
MLD v1/v2 Snooping
Multicast VLAN Registration (MVR)
IEEE 802.1AB LLDP/LLDP-MED
IEEE 802.3az Energy Efficient Ethernet
Q-in-Q

MANAGEMENT

Web-based Graphical User Interface (GUI)
Industry-standard CLI (Telnet/SSH) with context-sensitive help
Console management port on the front panel for ease of access
Comprehensive SNMP MIB support for standards based device management
Dual Image/Configuration
RMON (groups 1,2,3 and 9)
NTP/SNTP
IEEE 1588v2 Precision Time Protocol (PTP)
SNMP v1/v2/v3

QoS

Rate Limiting (Ingress/Egress Port-Based)
Priority Queues Schedule (WRR)
Port-Based QoS
IPv4/IPv6 DSCP
DiffServ
Auto VOIP
8 HW Queues per port for 802.1p priority tagging
Policy based dynamic QoS

PoE

Support IEEE 802.3af/IEEE802.3at on each port
Dynamic Power Allocation
PoE Scheduling
Auto-checking

PoE Budget:

1 Power Supply: 820W
2 Power Supplies: 1640W

DIAGNOSTIC TOOLS

Cable Test
Digital Diagnostic Monitoring (DDM) on SFP Ports
Ping polling for IPv4 and IPv6
Port Mirror (One to One, One to Many)
Remote Mirror
Event/Error Log/Syslog/SMTP Alerts
SFlow

PHYSICAL CHARACTERISTICS

Dimensions: 17.4 x 17.1 x 1.73 in (44.2 x 44 x 4.4 cm)
Weight: 12.45 lb (5.6 kg)

Heat Dissipation:

1 Power Supply: 3373.85 Btu/H
2 Power Supplies: 5551.92 Btu/H

MTBF: 69K hrs

ELECTRICAL CHARACTERISTICS

Power Supply AC Input: 100 - 240 V AC, 50/60 Hz
Max Power Consumption: 1840W

ENVIRONMENTAL REQUIREMENTS

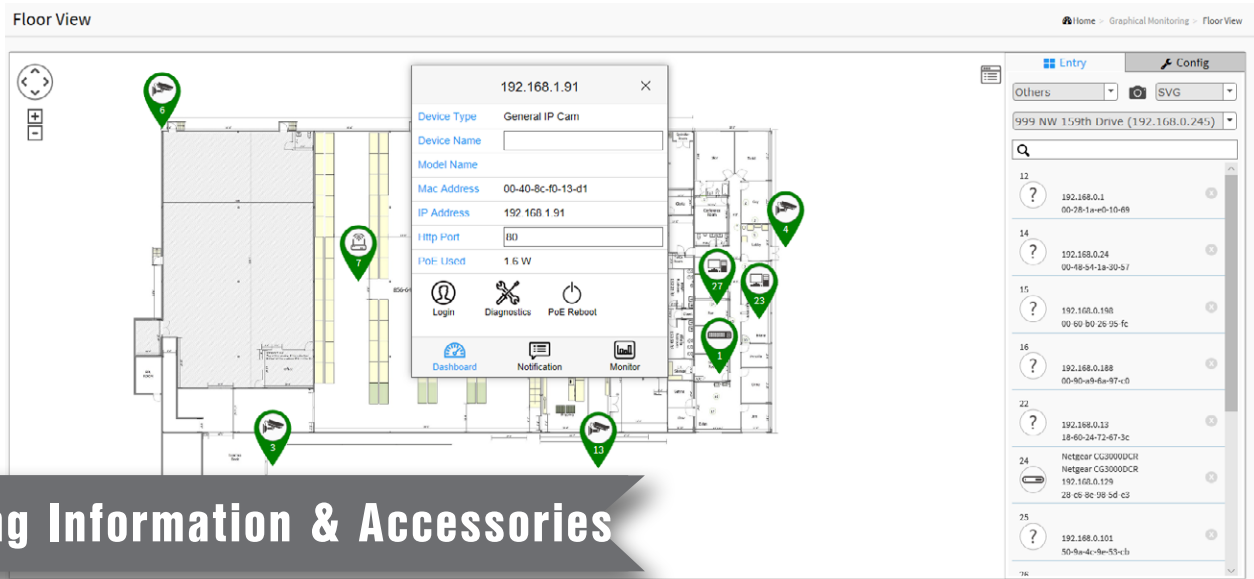
Operating Temperature: 32 to 113°F (0 to 45°C)
Storage Temperature: -4 to 158°F (-20 to 70°C)
Operating/Storage Humidity: 10 to 95% (non-condensing)

CERTIFICATIONS

Emissions: CE Mark: EN 55022, Class A; FCC Part 15 Class A
Immunity: IEC 61000-3-3, 61000-4-2/3/4/5/6/11

WARRANTY

Five Years (Including power supply)



Ordering Information & Accessories

ETHERNET SWITCHES

PART NO.	DESCRIPTION
SC50010	48 Port Gigabit PoE Managed Switch with 4 SFP+ Ports

ACCESSORIES

Power Supplies

AP50030	920W Extended Power Supply
---------	----------------------------

Replacement Cables

AC30030	C-500 Series Console Cable
---------	----------------------------

Replacement Mounting Kits

AM30140	C-500 48 Port Switches Rack Mount Kit
---------	---------------------------------------

SFP MODULES

PART NO.	DESCRIPTION
065-80SR10G300M	10GBaseSR SFP+ Module 850nm up to 300m
065-80LR10G10KM	10GBaseLR SFP+ Module 1310nm up to 10km
065-80PDAC1M	10G SFP+ Direct Attach Cable, 1m
065-79SXMG	1000SX Multi-Mode SFP Module 850nm up to 550m
065-79LXMG	1000LX Single-Mode SFP module 1310nm up to 10km
065-79ZXMG	1000ZX Single-Mode SFP Module 1550nm up to 80km
065-73FXMM5MG	100FX / OC-3 / STM-1 Multi-Mode SFP Module 1300nm up to 5km
065-73FXSM20MG	100FX / OC-3 / STM-1 Single-Mode SFP Module 1300nm up to 20km
065-791000TTXMG	10/100/1000TX SFP Module 100m span

For a complete list of SFP Modules visit www.signamax.com.



SIGNAMAX®

999 NW 159th Drive, Miami, FL 33169
T: 305-944-7710/800 446 2377 E: sales@signamax.com

CONNECT WITH US



www.signamax.com

PSS-C500_D-6-20