

## Wall-Mount Optical Fiber Enclosures

The following installation instructions are intended to be used when installing the following Signamax products:

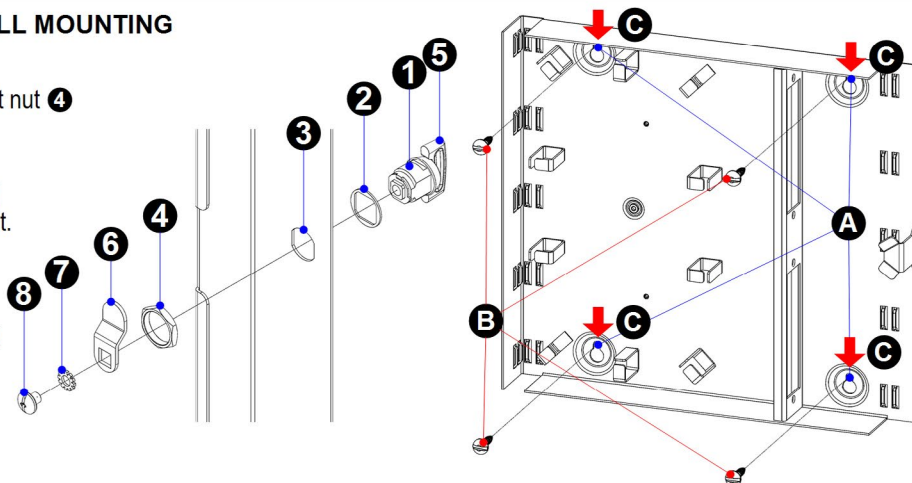
**WFE2M-B**    **WFE4M-B**  
**WFE2MS-B**    **WFE4MS-B**

### NOTES:

1. Some details shown in these instructions may look slightly different in actual products.
2. All operations are independent and can be performed in any order.
3. For termination/installation of optical fiber cable and connectors, please, refer to corresponding product instructions.

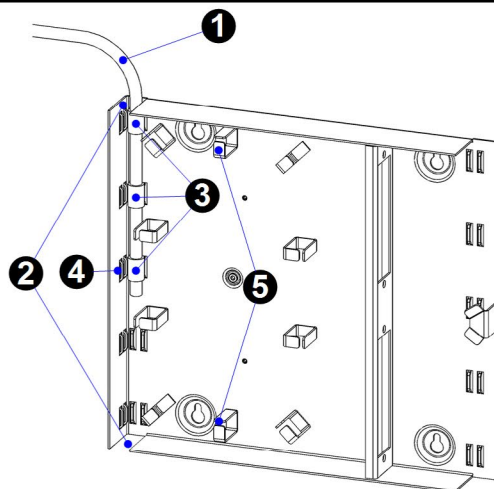
### LOCK/LATCH INSTALLATION AND WALL MOUNTING

1. Insert lock/latch core **1** and sealing gasket **2** (if provided) in enclosure's door opening **3**, put nut **4** on and tighten it.
2. Turn key/knob **5** counterclockwise to full left position, put cam on **6** oriented as shown, add retaining washer **7**, add screw **8** and tighten it.
3. Using enclosure as template, mark four screw positions **A** at desired mounting location.
4. Drill pilot holes, screw in four screws **B** leaving approximately 2-mm (0.01-in) gap under their heads.
5. Hang enclosure on screws **C**. Tighten screws if necessary.



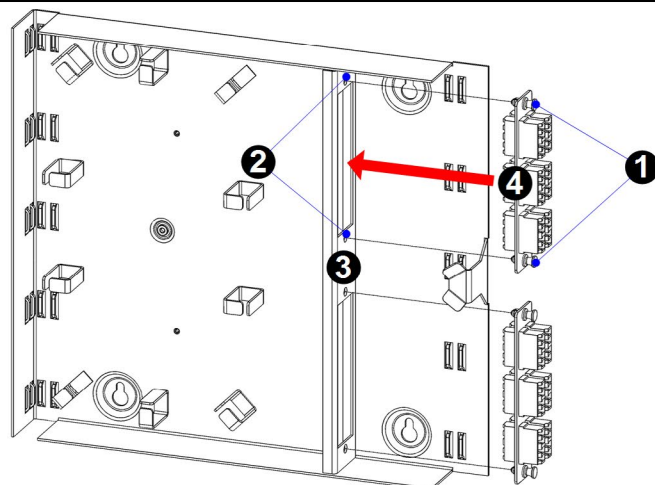
### DISTRIBUTION CABLE INSTALLATION

1. Route cable **1** to either top or bottom opening **2** and pull it to desired depth.
2. Fix cable with cable ties or cable tie wraps **3** (e.g., hook-and-loop tape) using bridge lances **4** located in two columns on enclosure's side or back as cable anchor points. Any number of ties can be used depending on cable's size and rigidity. Plastic cable ties are recommended to be used with rigid cables only, for all other cables soft cable tie wraps are required.
3. Fiber management brackets **5** can be used for various purposes:
  - thin cable slack storage;
  - fiber slack storage;
  - cord/pigtail slack storage.



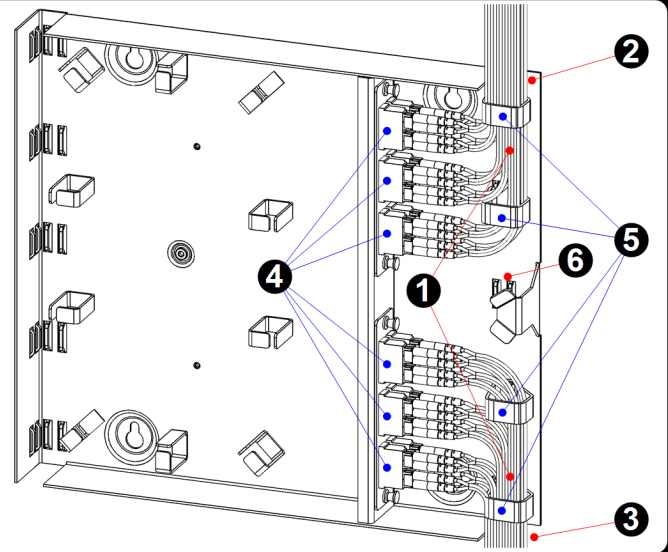
### ADAPTER PLATE INSTALLATION

1. Make sure all adapter plate fasteners **1** are released by pulling their knobs up slightly.
2. Align adapter plate fasteners **1** with corresponding mounting openings **2** in adapter plate panel **3**.
3. Push adapter plate **4** until fasteners **1** completely enter mounting openings **2** and there is no gap between adapter plate **4** and panel **3**.
4. Lock fasteners **1** pushing their knobs down.



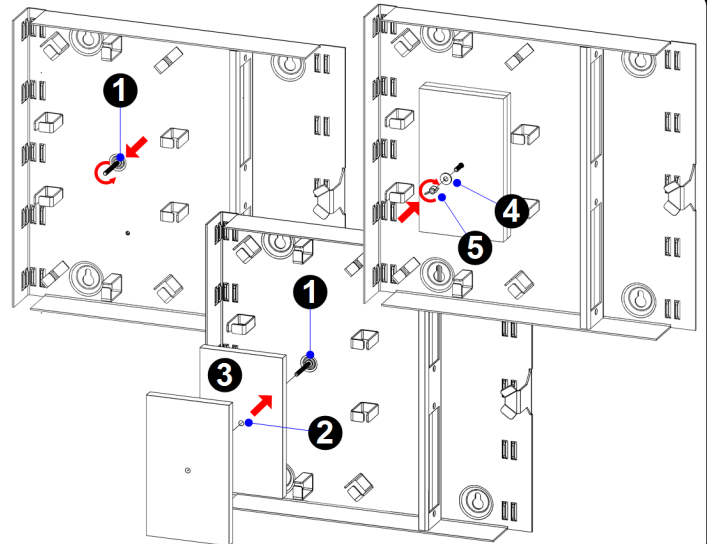
## EQUIPMENT/PATCH CORD INSTALLATION

1. Equipment/patch cords **1** can be routed to either top **2** or bottom **3** cable entry opening, or to both.
2. After connecting equipment/patch cords **1** to adapters **4**, gather equipment/patch cords **1** into bundles and secure using cable ties or cable tie wraps **5** (e.g., hook-and-loop tape) using bridge lances **6** located on enclosure's back as cable anchor points. Any number of ties can be used depending on cable's size and rigidity. Plastic cable ties are not recommended to be used with equipment/patch cords.



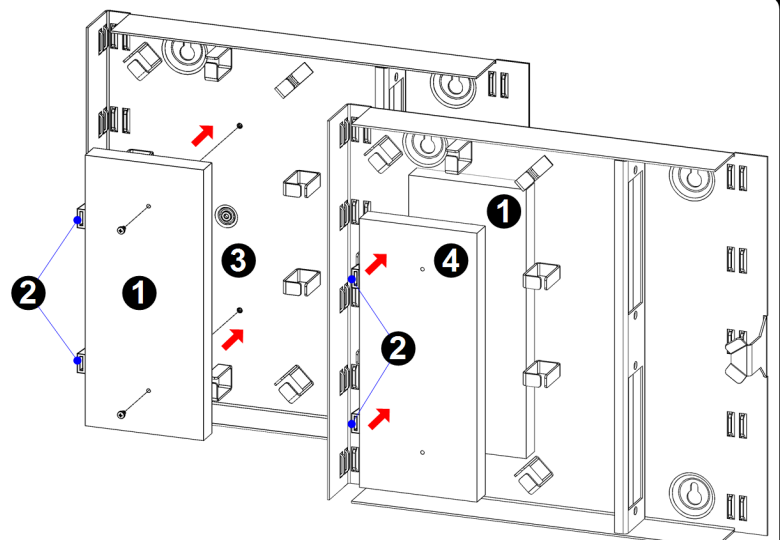
## FST-xF SPLICE TRAY INSTALLATION

1. Screw in M4×40 (6-32×1-½) [WFE2M enclosures] or M4×70 (6-32×2-¾) [WFE4M enclosures] screw **1** provided with FST-xF splice tray kit from enclosure's back and tighten it.
2. Thread screw **1** through round opening **2** located in the center of splice tray **3**. Add remaining trays if included (WFE2M enclosures: up to two trays; WFE4M enclosures: up to four trays). For additional stability double-sided adhesive pads included with trays may be attached to the first tray's bottom.
3. Add locking washer **4** and wing nut **5**, tighten wing nut until trays are securely fixed. Do not overtighten in order to prevent damaging upper tray or its contents.



## FST-xF1 SPLICE TRAY INSTALLATION

1. Remove clear plastic cover from FST-xF1 splice tray **1**. Orient tray vertically with snap-on **2** clips on its left side. Affix tray to enclosure's back using two M3×8 (4-40×5/16) screws **3** provided with splice tray kit. Do not overtighten screws in order to prevent damaging tray.
2. In order to add (stack) additional trays (WFE2M enclosures: up to two trays; WFE4M enclosures: up to four trays) join each next tray **4** to previous one **1** using clips **2**.



KEEPING YOUR WORLD CONNECTED